

VELUX®

A BALLROOM UNDER A VINEYARD

Extension of a winery in Osterfingen, Switzerland





NEW LIFE FOR AN OLD BUILDING

In the green hills of the Swiss canton of Schaffhausen in the north of Switzerland, not far from the Rhine river, in the middle of vineyards stands an old barn. For four centuries it has been used for wine pressing and gatherings alike. Not only the building itself is of historical value, also the way it is standing among the vineyards.

In 2007 the cooperative of local wine producers decided to invest in tourism. In 2010 a competition for refurbishment of the winepress building was held, with the aim to enrich the historical place with a contemporary program. The cooperative needed a new, multifunction space for parties and events, as well as a small restaurant with so-called "wine library."

Six architecture offices were chosen from all applications to come up with a design proposal. SPPA Architekten team, under the lead of Peter Trachsler, convinced the jury with a simple and elegant solution.

SPPA Architekten work portfolio consists mainly of much larger objects, from large new-build housing projects to refurbishment high-grade refurbishments of historical buildings downtown Zürich. The winepress building in the rural area, in German "Bergtrotte", is an exceptional project. The office decided to take part in the competition because of their interest in dealing with historical building substance.

"We took part because of our interest in re-using existing buildings. It's important to look what to keep, what to change, how to transform and reuse, instead of only constructing new houses. We have a lot of experience on this topic after many projects. The other reason to participate was to try something new: the combination of tourism, wine industry and gastronomy captured our phantasy."

Peter Trachsler, partner at the SPPA Architekten



"Everyone needs daylight, we all know it. We go further and ask ourselves the question where does the daylight come from and what is its quality. We like to combine facade windows with roof openings because the zenithal light is much stronger and very different in tone from the one coming in from the side. Looking up is also great, you see blue sky, or grey sky, or the stars."

Peter Trachsler, partner at the SPPA Architekten



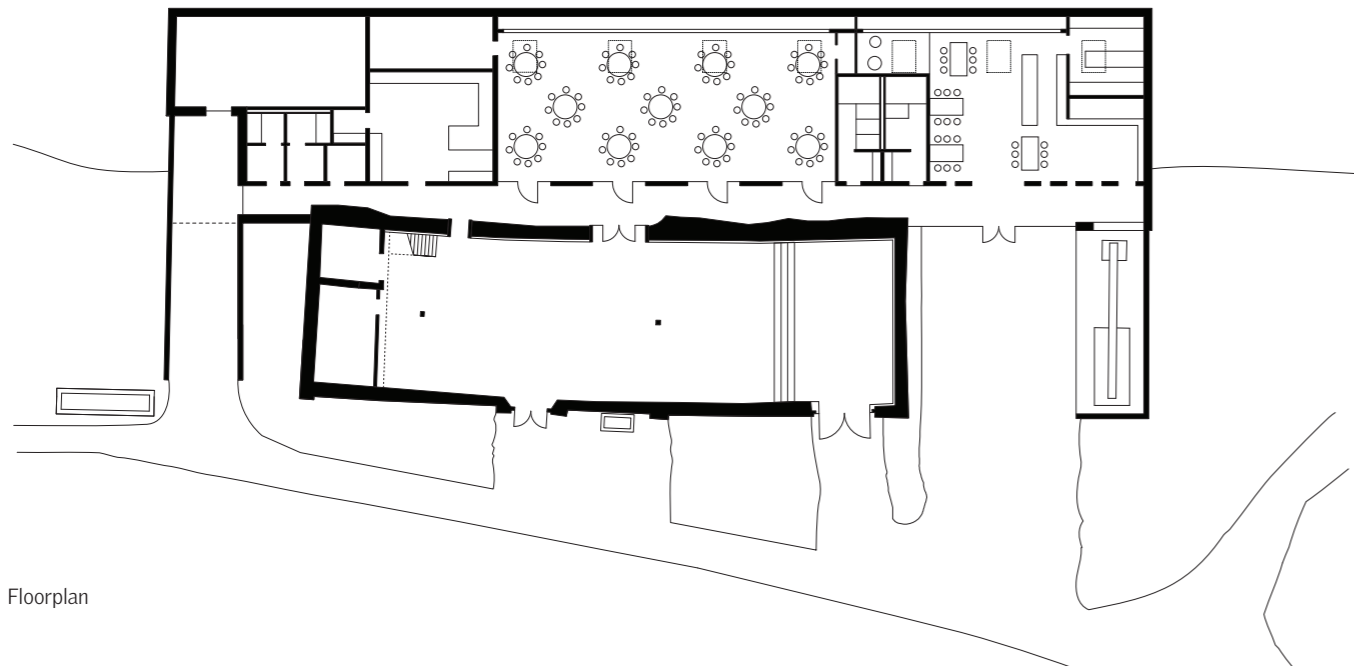
A MODEST APPROACH

"Our idea, although extravagant at first glance, was very rational. We did not want to compete with the existing building, as we like its massive appearance and solitaire appearance in the landscape. So we proposed a non-building, rooms in the hill underground, behind the barn. It was anyway necessary to reinforce the structure, as the slope was pressing too hard on the old wall. A new, high-precision concrete wall meeting the old, irregular one, excavated and shown in all its rough beauty is one of the key elements of the project."

Peter Trachsler, partner at the SPPA Architekten

SPPA Architekten decided to keep the old barn as close to the historical shape as possible. No facade openings were added, only the entrance door was replaced by a new one, designed to match the wooden planks on the exterior. A stage and a mezzanine level on the other side of the room flank the room, still unheated, just given a new, even flooring.

The actual ancient winepress was moved from the corner of the barn to its own new concrete room on the east side of the barn, for all passers-by to see. The generous space between this new volume and the barn leads to the entrance and serves as an outdoor area for the restaurant. On the west, there is a separate technical entrance for the kitchen and staff. The new underground part houses, next to a restaurant, an event room, kitchen, all necessary technical facilities: all lined-up along the spectacular corridor showing how the old and new buildings meet.



Floorplan



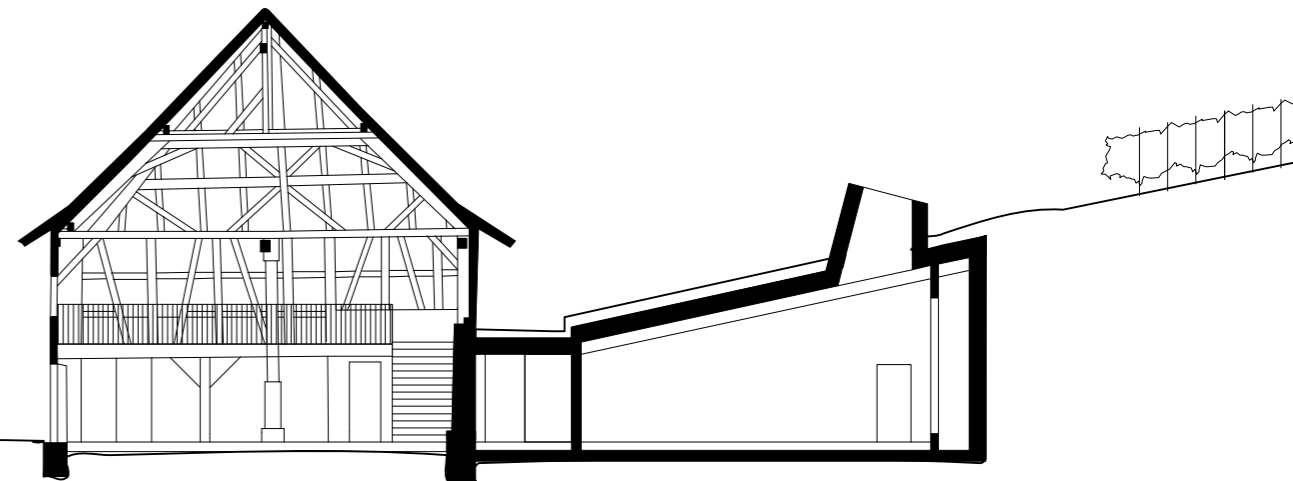


ONLY SKY ABOVE US

"Vertical light was the only option in our project, an option we like a lot. The row of windows was initially supposed to consist of oval openings. As we were developing the project further after the won competition, we had to simplify things. Ovals glazings were replaced by standard roof windows from VELUX. We knew the products from earlier projects: working on refurbishments, we deal with a lot of attics in need of daylight. Here, the windows are placed far above the room ceiling, in tubes, because of the steepness of the slope. We formed them for optimal light distribution, angled, so the windows are hardly visible from the interior."

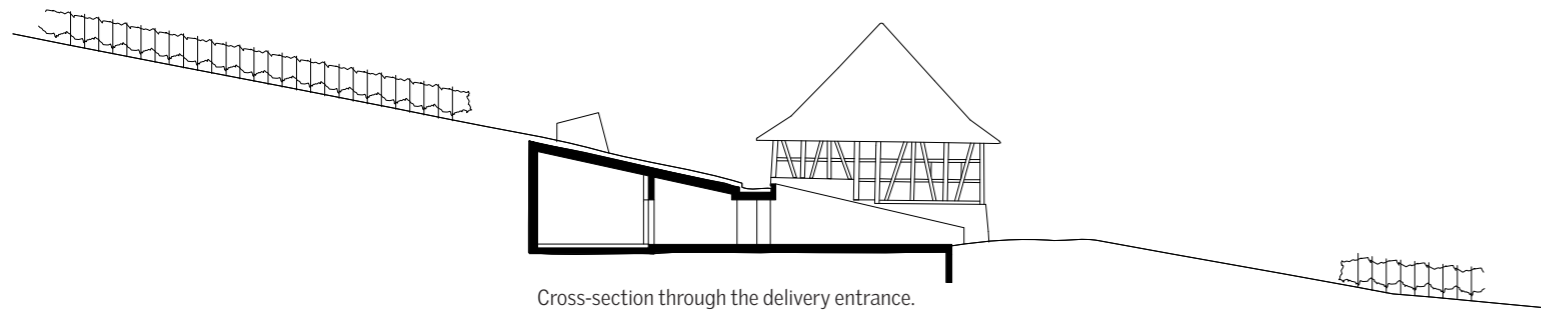
Peter Trachsler, partner at the SPPA Architekten

Long electric lights are hidden in the walls of the tubes, enhancing the daylight, shining on the wine exhibition, placed along the northern wall. Also here form follows more than one function: next to the primary one, the wine display, the wall serves as an acoustic panel and hides the ventilation system. The precisely cast concrete ceiling is also inlaid with acoustic panels in matching colour.

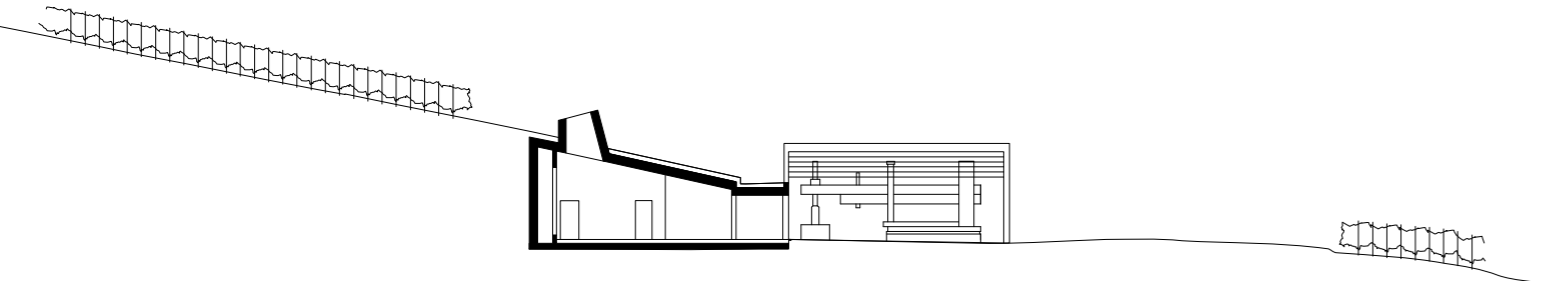
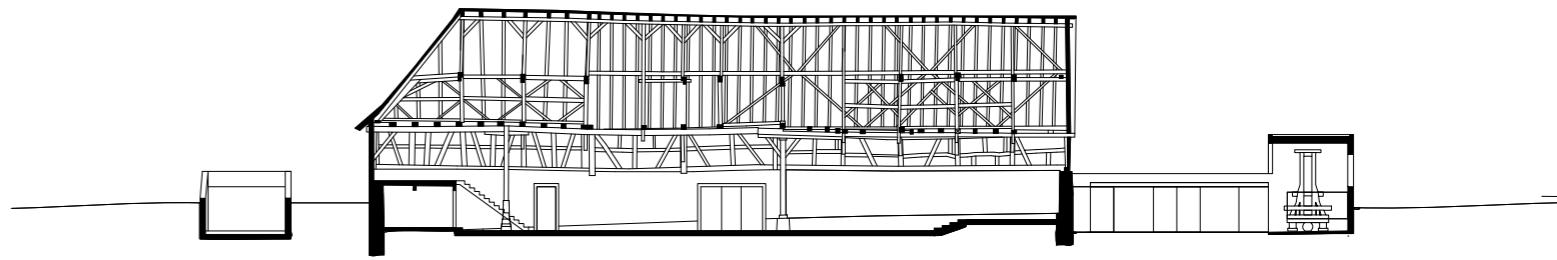


Cross-section showing the wooden structure of the barn with the new mezzanine. In the new part it cuts through light tube with VELUX window.





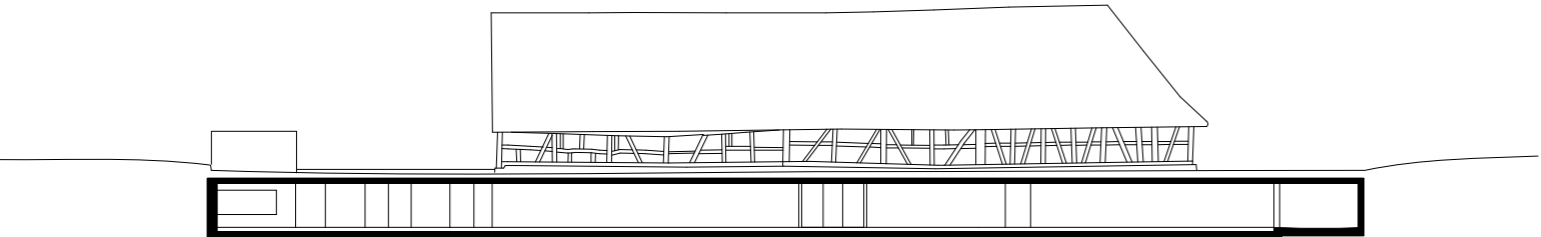
Cross-section through the delivery entrance.



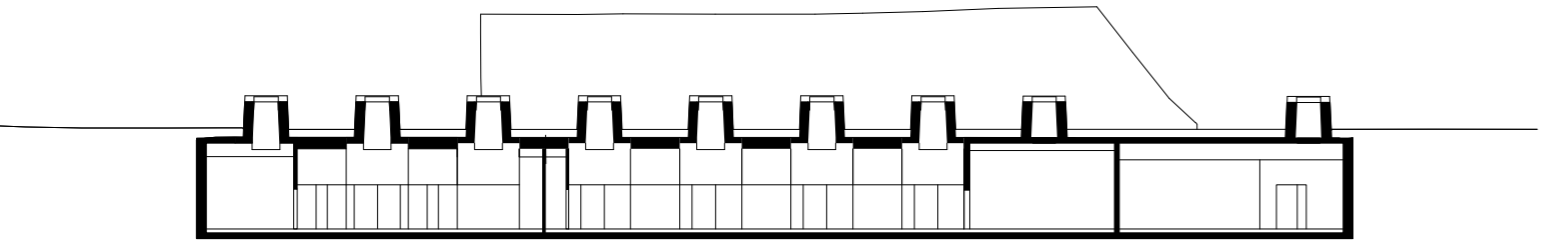
Cross-section through the main entrance, with the view on the old winepress, now exhibited outdoors.

"Zenithal openings are great; even a little one brings so much light into the room. We like to play with different light qualities and their combinations. Imagine how nice a rather dark corridor with a strong light from above at the end of it can be."

Peter Trachsler, partner at the SPPA Architekten



Longitudal through the corridor connecting the annex with the historical house. On the left, the roof of the winepress exhibition building is visible.



Longitudal through the underground multi-fuction room and the restaurant, showing the "pearl string" of roof openings. On the next page a section through the historical barn, with its new mezzanine and stage. On the right the main entrance and the exhibition building for the winepress.





PROJECT DATA

Project:	Renovation and extension of a historical winepress building with a multi-function room and restaurant
Location:	Osterfingen, Switzerland
Design:	SPPA Architekten, Zürich, Switzerland
Client:	Stiftung Bergtrotte Osterfingen
Time:	planning 2011-2014, realisation 2014-2015
Floor area:	1280 sqm
Photos:	Jürg Zimmermann



VELUX Schweiz AG
Bahnhofstrasse 40
4663 Aarburg
Tel: 062 289 44 45

Bringing light to life

VELUX®

© 2019 VELUX GROUP. VELUX, THE VELUX LOGO AND IN SOME COUNTRIES ARE REGISTERED TRADEMARKS OF VELUX LIGHTING SYSTEMS B.V. OR VELUX GROUP.